



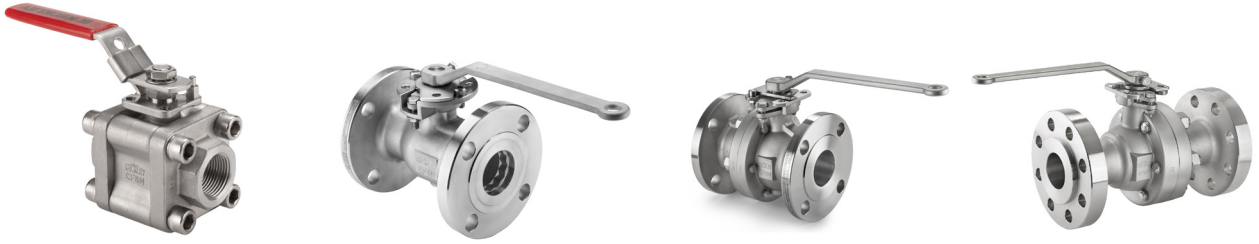
**FUGITIVE EMISSIONS  
(API 641)  
Compliant Ball Valves  
IN STOCK**

**KECKLEY COMPANY**  
3400 Cleveland Street P.O. Box 67  
Skokie, IL 60076  
800-KECKLEY (800.532.5539)  
847.674.8422  
FAX 847.674.2106  
email: [sales@keckley.com](mailto:sales@keckley.com)  
website: [www.keckley.com](http://www.keckley.com)

**Established 1914**



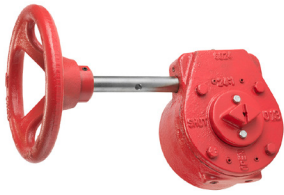
Description	BV12	BVS2	BVSC	BVS3	BVS6
<b>Size</b>	1/4" - 2"	1/4" - 4"	1/4" - 2"	1/4" - 2"	1/4" - 2"
<b>Pressure Class</b>	2000 WOG	2160 WOG	Class 900 (2160 WOG)	Class 1500 (3600 WOG)	Class 2500 (6000 WOG)
<b>End Connection</b>	NPT	FNPT or MNPT x FNPT	FNPT or Socket Weld <sup>1</sup>	FNPT or Socket Weld <sup>1</sup>	FNPT or Socket Weld
<b>Port Size</b>	Double Reduced Port	Full Port	Full Port	Full Port (1/4", 1/2", 3/4", 1", 1 1/2") Reduced Port (3/8", 1", 2")	Full Port (1/4", 1/2", 3/4", 1", 1 1/2") Reduced Port (3/8", 1", 2")
<b>Body/Trim Material</b>	WCB / 316ss or CF8M / 316ss	WCB / 316ss or CF8M / 316ss	WCB / 316ss or CF8M / 316ss	WCB / 316ss or CF8M / 316ss	WCB / 316ss or CF8M / 316ss
<b>Seat Material</b>	R-PTFE	R-PTFE (Available Options PEEK)	R-PTFE (Available Options PEEK)	Delrin AF (Available Options PEEK)	PEEK
<b>Handle</b>	304ss Latch Lock (Optional: 304ss Lock- ing Oval)	304ss Latch Lock (Optional: 304ss Lock- ing Oval)	304ss Latch Lock (Optional: 304ss Lock- ing Oval)	304ss Latch Lock (Optional: 304ss Locking Oval or Spring Return "Deadman" Handle)	304ss Latch Lock (Optional: 304ss Lock- ing Oval)
<b>Features</b>	<ul style="list-style-type: none"> <li>Unibody Design</li> <li>API 607 6th Edition Fire-safe</li> <li>NACE MR0175 Compliant</li> </ul>	<ul style="list-style-type: none"> <li>Seal Welded</li> <li>API 607 6th Edition Fire-Safe</li> <li>API 641 Fugitive Emissions Compliant</li> <li>NACE MR0175 Compliant</li> <li>Standard ISO Actuator Mounting Pads on all Sizes</li> </ul>	<ul style="list-style-type: none"> <li>Seal Welded</li> <li>ASME B16.34 Class 900</li> <li>Fully Compliant to API 608</li> <li>API 607 6th Edition Fire-Safe</li> <li>API 641 Fugitive Emissions Compliant</li> <li>NACE MR0175 Compliant</li> <li>Standard ISO Actuator Mounting Pads on all Sizes</li> </ul>	<ul style="list-style-type: none"> <li>Seal Welded</li> <li>ASME B16.34 Class 1500</li> <li>Fully Compliant to API 608</li> <li>API 607 6th Edition Fire-Safe</li> <li>API 641 Fugitive Emissions Compliant</li> <li>NACE MR0175 Compliant</li> <li>Standard ISO Actuator Mounting Pads on all Sizes</li> </ul>	<ul style="list-style-type: none"> <li>Seal Welded</li> <li>ASME B16.34 Class 2500</li> <li>Fully Compliant to API 608</li> <li>API 607 6th Edition Fire-Safe</li> <li>NACE MR0175 Compliant</li> <li>Standard ISO Actuator Mounting Pads on all Sizes</li> </ul>
<b>Note(s):</b>	1. Seal Material Graphite	2. Seal Material Graphite.	1. PEEK Seats required for Socket Weld Ends. 2. Seal Material Graphite.	1. PEEK Seats required for Socket Weld Ends. 2. Seal Material Graphite.	1. Seal Material Graphite.
<b>ASME (A 351, CF8M) Pressure Temperature Ratings (PSIG) (Standard Seats)</b>					
100°F	2000 PSI	2160 PSI (1/4" - 2")	2160 PSI	3600 PSI	6000 PSI
200°F	1500 PSI	1600 PSI (1/4" - 2")	1633 PSI	[Max 185°F = 2000 PSI]	5000 PSI
300°F	1000 PSI	1040 PSI (1/4" - 2")	1105 PSI	Not Rated	4000 PSI
350°F	725 PSI	760 PSI	841 PSI	Not Rated	3500 PSI
400°F	600 PSI	480 PSI	578 PSI	Not Rated	3000 PSI
450°F	300 PSI	200 PSI	314 PSI	Not Rated	1000 PSI
500°F	50 PSI	Not Rated	50 PSI	Not Rated	200 PSI



Description	BVM3	BVF1	BVF2	BVF2
<b>Size</b>	¼" - 2½"	½" - 6"	½" - 8"	1½" - 4", 6"
<b>Pressure Rating</b>	Class 800 (1920 WOG)	Class 150 & Class 300	Class 150 & Class 300	Class 600
<b>End Connection</b>	NPT or Socket Weld <sup>1</sup>	150# Flanged RF & 300# Flanged RF	150# Flanged RF & 300# Flanged RF	600# Flanged RF or RTJ
<b>Port Size</b>	Full Port & Reduced Port	Reduced Port	Full Port	Full Port (1½", 2", 3", 4") Reduced Port (6")
<b>Body/Trim Material</b>	WCB / 316ss or CF8M / 316ss	WCB / 316ss or CF8M / 316ss	WCB / 316ss or CF8M / 316ss	WCB / 316ss or CF8M / 316ss
<b>Seat Material</b>	R-PTFE (Available Options PEEK)	R-PTFE (Available Options PEEK)	R-PTFE (Available Options PEEK)	R-PTFE
<b>Handle</b>	304ss Latch Lock (Optional: 304ss Locking Oval)	304ss Latch Lock (½" - 1") 304ss Locking (1" - 6") (Optional: 304ss Locking Oval for ½" - 1")	304ss Latch Lock (½" - 1") 304ss Locking (1" - 6") Bare Stem (8") (Optional: 304ss Locking Oval for ½" - 1")	304ss Locking
<b>Features</b>	<ul style="list-style-type: none"> <li>3-Piece Maintenance Design</li> <li>ASME B16.34 Class 800</li> <li>Fully Compliant to API 608</li> <li>API 607 6th Edition Fire-Safe</li> <li>NACE MR0175 Compliant</li> <li>ISO 5211 Actuator Mounting Pads on all Sizes</li> </ul>	<ul style="list-style-type: none"> <li>Unibody Design</li> <li>ASME B16.34 Compliant</li> <li>Fully Compliant to API 608</li> <li>API 607 6th Edition Fire-Safe</li> <li>API 641 Fugitive Emissions Compliant</li> <li>NACE MR0175 Compliant</li> <li>Standard ISO Actuator Mounting Pads on all Sizes</li> </ul>	<ul style="list-style-type: none"> <li>2-Piece Bolted Body</li> <li>ASME B16.34 Compliant</li> <li>Fully Compliant to API 608</li> <li>API 607 6th Edition Fire-Safe</li> <li>API 641 Fugitive Emissions Compliant</li> <li>NACE MR0175 Compliant</li> <li>Standard ISO Actuator Mounting Pads on all Sizes</li> </ul>	<ul style="list-style-type: none"> <li>2-Piece Bolted Body</li> <li>ASME B16.34 Compliant</li> <li>Fully Compliant to API 608</li> <li>API 607 6th Edition Fire-Safe</li> <li>NACE MR0175 Compliant</li> <li>Standard ISO Actuator Mounting Pads on all Sizes</li> </ul>
<b>Note(s):</b>	1. PEEK Seats required for Socket Weld Ends. 2. Seal Material Graphite.	1. Seal Material Graphite.	1. Seal Material Graphite.	1. Seal Material Graphite.

**ASME (A 351, CF8M) Pressure Temperature Ratings (PSIG) (Standard Seats)**

		150lb	300lb	150lb	300lb	600lb
100°F	1920 PSI	275 PSI	720 PSI	275 PSI	720 PSI	1440 PSI
200°F	1654 PSI	235 PSI	620 PSI	235 PSI	620 PSI	1100 PSI
300°F	1217 PSI	215 PSI	560 PSI	215 PSI	560 PSI	900 PSI
350°F	925 PSI	205 PSI	537 PSI	205 PSI	537 PSI	800 PSI
400°F	633 PSI	195 PSI	515 PSI	195 PSI	515 PSI	515 PSI
450°F	342 PSI	182 PSI	298 PSI	182 PSI	298 PSI	298 PSI
500°F	50 PSI	50 PSI	50 PSI	50 PSI	50 PSI	50 PSI



Description	Gear Operators (GO)	Double Acting Actuators (DA)	Spring Return Actuators (SR)
<b>Features</b>	<ul style="list-style-type: none"> <li>• 1,000 to 18,000 in-lb Models</li> <li>• ISO Mounting Patterns</li> <li>• Standard ISO Actuator</li> <li>• Weatherproof Design with External Lubrication Fitting</li> <li>• External Failure Upon Over-torque</li> </ul>	<ul style="list-style-type: none"> <li>• 125 to 11,000 in-lb Models</li> <li>• ISO 5211 Mounting Patterns</li> <li>• NAMUR Solenoid and Topworks Mounting Patterns</li> <li>• Dual Positions Limit Stops</li> <li>• Stainless Steel Fasteners</li> <li>• Epoxy Coated End Caps</li> <li>• Hard Anodized Body</li> <li>• Standard Position Indicator</li> <li>• Internally Retained Output Shaft</li> <li>• "Double Square" Output Shaft Broaching</li> </ul>	<ul style="list-style-type: none"> <li>• 250 to 7,000 in-lb Models</li> <li>• ISO 5211 Mounting Patterns</li> <li>• NAMUR Solenoid and Topworks Mounting Patterns</li> <li>• Dual Positions Limit Stops</li> <li>• Stainless Steel Fasteners</li> <li>• Epoxy Coated End Caps</li> <li>• Hard Anodized Body</li> <li>• Encapsulated Spring Assemblies</li> <li>• Standard Position Indicator</li> <li>• Internally Retained Output Shaft</li> <li>• "Double Square" Output Shaft Broaching</li> </ul>



Description	Mounting Hardware	Limit Switch (LS)	Solenoids (SOL)
<b>Features</b>	<ul style="list-style-type: none"> <li>• Stainless Steel Brackets with Notched Cut-out for Easy Access to Valve Packing Nut</li> <li>• Stainless Steel Couplers</li> <li>• Stainless Steel Fasteners</li> <li>• Complete ISO 5211 Mounting</li> </ul>	<ul style="list-style-type: none"> <li>• Visual Position Indicator</li> <li>• Easy Adjustment of Cam Position</li> <li>• Eight (8) Contacts of Terminal Ports</li> <li>• 1/2" Dual Conduit Entries</li> <li>• NAMUR Mounting Capabilities</li> <li>• Standard IP67 Enclosure 16 Amp 115VAC Rated Switches</li> <li>• Two (2) SPDT Switches</li> </ul>	<ul style="list-style-type: none"> <li>• NAMUR Mounting Capabilities</li> <li>• Convertible from 3-way to 4-way for DA and SR</li> <li>• Inlet and Exhaust - 1/4 NPT</li> <li>• Cylinder Ports - O-Ring Seal Per NAMUR Standard</li> <li>• Standard NEMA 4</li> <li>• UL Listed</li> </ul>
<b>Option(s):</b>		<ol style="list-style-type: none"> <li>1. NEMA 4/4x (Standard)</li> <li>2. NEMA 4/4x, 7 &amp; 9 (Explosion Proof)</li> </ol>	<ol style="list-style-type: none"> <li>1. NEMA 4/4x (Standard)</li> <li>2. NEMA 4/4x, 7 &amp; 9 (Explosion Proof)</li> <li>3. 120VAC, 24VDC, &amp; 24VAC Units Available</li> <li>4. CSA Listing</li> </ol>

