

No Question. We Have the Answers.

**KECKLEY COMPANY**

3400 Cleveland Street P.O. Box 67  
Skokie, IL 60076  
800-KECKLEY (800.532.5539)  
847.674.8422  
FAX 847.674.2106  
email: [sales@keckley.com](mailto:sales@keckley.com)  
website: [www.keckley.com](http://www.keckley.com)

**Established 1914**

## Ball Valves



### Unibody Threaded

\*Style BV12  
2000 W.O.G.  
R-PTFE Seats  
Sizes 1/4" - 2"  
Reduced Port



### Seal Welded

\*Style BVS2  
2160 W.O.G.  
R-PTFE Seats  
Sizes 1/4" - 4"  
Full Port



### Seal Welded

\*Style BVSC  
Class 900 (2160 PSIG)  
R-PTFE Seats  
Sizes 1/4" - 2"  
Full Port



### Seal Welded

\*Style BVS3  
Class 1500 (3600 PSIG)  
Delrin AF Seats  
Sizes 1/4" - 2"  
Full & Reduced Port



### Seal Welded

\*Style BVS6  
Class 2500 (6000 PSIG)  
PEEK Seats  
Sizes 1/4" - 2"  
Full & Reduced Port



### Unibody Flanged

\*Style BVF1  
Class 150 & 300  
R-PTFE Seats  
Sizes 1/2" - 6"  
Reduced Port

\*Body/Trim Material: CS w/ 316SS Trim or CF8M w/ 316SS Trim.

\*Available End Connections: NPT Ends, Socket Weld Ends, Socket Weld x FNPT Ends, or MNPT x FNPT Ends.



### Split-Body Flanged

\*Style BVF2  
Class 150 & 300  
R-PTFE Seats  
Sizes 1/2" - 8"  
Full Port



### Split-Body Flanged

\*Style BVF2  
Class 600  
R-PTFE Seats  
Sizes 1 1/2" - 6"  
Full Port



### 3-Piece Maintenance Design

\*Style BVM3  
Class 800  
1920 W.O.G.  
R-PTFE Seats  
Sizes 1/4" - 2 1/2"  
Full & Reduced Port



### Actuated Ball Valves

Threaded or Flanged  
All Pressure Classes  
Spring Return or Double Acting  
Sizes 1/4" - 8"



\*Body/Trim Material: CS w/ 316SS Trim or CF8M w/ 316SS Trim.

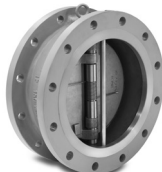
\*Available End Connections: NPT Ends, Socket Weld Ends, Socket Weld x FNPT Ends, or MNPT x FNPT Ends.

## Check Valves



### Double Disc Cast Iron

\*Carbon Steel  
\*316 Stainless Steel  
Style DD  
125# - 1500#  
Sizes 2" - 48"



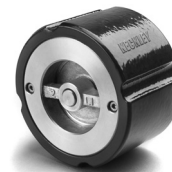
### Double Flange Body

\*Carbon Steel  
\*316 Stainless Steel  
Style DF (Flange)  
150# - 1500#  
Sizes 2" - 48"



### Lug Body

\*Carbon Steel  
\*Stainless Steel  
Style DL (Lug Style)  
150# - 1500# Flanged  
Sizes 2" - 48"



### Wafer Center Guided Cast Iron

Carbon Steel  
316 Stainless Steel  
Style CW  
125# - 300#  
Sizes 2" - 12"



### Globe Center Guided Cast Iron

Carbon Steel  
316 Stainless Steel  
Style CG  
125# - 300#  
Sizes 2" - 24"

\*All Cast Carbon Steel and Cast 316 Stainless Steel Body Double Disc Check Valves are Retainerless Design.

## Y-Strainers



### Cast Iron

Style B / Style B7  
250# Threaded  
Sizes 1/4" - 4"  
(Style B7 Sizes 1/4" - 3")



### Cast Iron

Style A-7  
125 # & 250# Flanged  
Sizes 2" - 24"



### Cast Ductile Iron

Style BDI  
250# Threaded  
Sizes 1/2" - 2"



### Cast Bronze

Style F-150 / Style E-150  
125# Threaded or Solder Joint  
Sizes 1/4" - 3"



### Cast Bronze (Lead Free)

Style F7 / E7  
125# Threaded or Solder Joint  
Sizes 1/4" - 3"



### Cast Bronze

Style F-300  
250# Threaded  
Sizes 1/4" - 3"



### Cast Bronze

Style E-300  
250# Solder Joint  
Sizes 1/4" - 3"



### Cast Bronze

Style BA-7  
150# & 300# Flanged  
Sizes 1/2" - 12"



### Cast Carbon Steel

Style SB-7 / SB-7BC  
600# Threaded or 600# Socket Weld  
Sizes 1/4" - 3"



### Cast Carbon Steel

Style SB  
1500# Threaded or 1500# Socket Weld  
Sizes 1/2" - 3"



### Cast Carbon Steel

Style SA-7  
150# & 300# Flanged  
Sizes 1/2" - 24"



### Cast Carbon Steel

Style SA-7  
150# & 300# Butt Weld  
Sizes 1/2" - 24"

## Y-Strainers (cont.)



**Cast Carbon Steel**  
Style SA  
600# Flanged or  
Butt Weld  
Sizes ½" - 24"



**Cast 316 Stainless Steel**  
Style SSB-7 / SSB-7BC  
600# Threaded or  
600# Socket Weld  
Sizes ¼" - 3"



**Cast 316 Stainless Steel**  
Style SSB  
1500# Threaded or  
1500# Socket Weld  
Sizes ½" - 3"



**Cast 316 Stainless Steel**  
Style SSA-7  
150# & 300# Flanged  
Sizes ½" - 24"



**Cast 316 Stainless Steel**  
Style SSA-7  
150# & 300# Butt Weld  
Sizes ½" - 24"



**Cast 316 Stainless Steel**  
Style SSA  
600# Flanged or  
Butt Weld  
Sizes ½" - 24"

## Basket Strainers



**Cast Iron**  
Style KT-7  
125# Threaded  
Sizes ¾" - 3"



**Cast Iron**  
Style D  
125# & 250# Flanged  
Sizes 2" - 12"



**Cast Iron**  
Style GFV  
125# & 250# Flanged  
Sizes 2" - 24"



**Cast Iron**  
Style GFV-K  
125# Flanged  
Sizes 2" - 16"



**Cast Iron**  
Style GFVK-7  
125# Flanged  
Sizes 2" - 12"



**Cast Ductile Iron**  
Style KF-7  
125# Flanged  
Sizes 1½" - 12"



**Cast Bronze**  
Style BKF-7  
150# Flanged  
Sizes 1½" - 12"



**Cast Bronze**  
Style BGFV  
150# & 300# Flanged  
Sizes 2" - 12"



**Cast Carbon Steel**  
Style SD / SD-K\*  
150# & 300# Threaded  
Sizes ¼" - 3"



**Cast Carbon Steel**  
Style SD  
150# & 300# Flanged  
Sizes 2" - 12"



**Cast Carbon Steel**  
Style SGFV / SGFV-K\*  
150# & 300# Flanged  
Sizes 1½" - 14"



**Cast 316 Stainless Steel**  
Style SSD / SSD-K\*  
150# & 300# Threaded  
Sizes ¼" - 3"



**Cast 316 Stainless Steel**  
Style SSGFV / SSGFV-K\*  
150# & 300# Flanged  
Sizes 1½" - 14"

\*Units with knob type covers are available in 150# class only.

## Duplex Strainers



**Cast Iron  
Cast Bronze  
Cast Carbon Steel  
Cast 316 Stainless Steel**  
Threaded  
Sizes ¾" - 2½"



**Cast Iron  
Cast Bronze  
Cast Carbon Steel  
Cast 316 Stainless Steel**  
Flanged  
Sizes 1" - 8"



**Cast Iron  
Cast Bronze  
Cast Carbon Steel  
Cast 316 Stainless Steel**  
Flanged  
Sizes 10" - 20"



**Fabricated  
Copper Nickel  
Carbon Steel  
Stainless Steel**  
150# - 600# Flanged  
Sizes 6" - 24"

### Duplex Options:



**Differential Pressure  
Indicators**



**DIN Electrical Probes**

## Fabricated Strainers



**Fabricated - "Y"**  
**Carbon Steel - FSA**  
**Stainless Steel - FSSA**  
150# - 2500#  
Flanged or Butt Weld  
Sizes 2" - 36"



**Fabricated - Basket**  
**Carbon Steel - FB**  
**Stainless Steel - FB**  
150# - 2500#  
Flanged or Butt Weld  
Sizes 2" - 36"

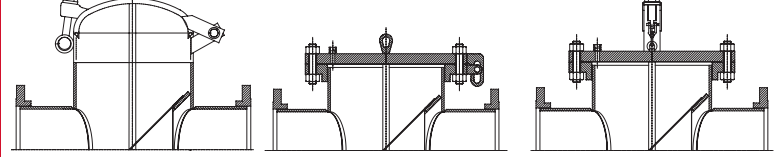


**Fabricated - Tee**  
**Carbon Steel - T**  
**Stainless Steel - T**  
150# - 2500#  
Flanged or Butt Weld  
Sizes 2" - 48"

90/10 Copper Nickel, Alloy 20, Monel, and other materials, pressure classes or designs available upon request.

## ASME Certified Code

ASME "U" Code Stamp Available Upon Request.



**Quick Open Cover**  
Style FB-Q

**Bolted Slide Hinge Cover**  
Style FB-H

**Integral Davit Swing Arm**  
Style FB-D

### Special Options on Fabricated Strainers

- Differential Pressure Gauges
- Custom Blowdown Connections
- Custom Nozzle Positions
- Custom Basket Configurations
- Custom Venting & Special Drains
- Custom Floor Stands
- Special Coating & Galvanizing
- Custom Mounting Hardware
- Oversized Bodies

## Temporary Strainers



**Fabricated - Cone**  
**Carbon Steel**  
**Stainless Steel**  
Style TC  
150# - 600# Flanged  
Sizes 1½" - 24"



**Fabricated - Basket**  
**Carbon Steel**  
**Stainless Steel**  
Style TB  
150# - 600# Flanged  
Sizes 1½" - 24"



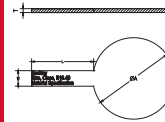
**Fabricated - Plate**  
**Carbon Steel**  
**Stainless Steel**  
Style TP  
150# - 600# Flanged  
Sizes 1½" - 24"

## Line Blind

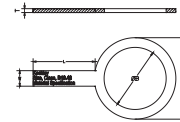


**Fabricated**  
**Carbon Steel - FLB**  
**Stainless Steel - FLB**  
150# - 1500# Flanged or  
Butt Weld  
Sizes 1" - 24"

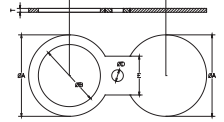
## Blinds, Spacers, Spectacles



**Paddle Blind**  
**Carbon Steel**  
**Stainless Steel**  
150# - 1500# Flanged  
Sizes ½" - 24"



**Paddle Spacers**  
**Carbon Steel**  
**Stainless Steel**  
150# - 1500# Flanged  
Sizes ½" - 24"



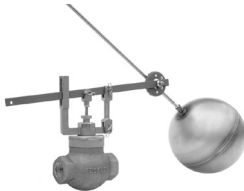
**Spectacle Blinds**  
**Carbon Steel**  
**Stainless Steel**  
150# - 1500# Flanged  
Sizes ½" - 24"

## Float & Lever Valves

All Available - Angle or Globe Pattern - Screwed or Flanged.



Bronze, Cast Iron, &  
316 SS body & trim.  
Double Seated  
(Non Tight Closing)  
Type 27  
Sizes ½" - 12"



Bronze, Cast Iron, &  
316 SS body & trim.  
Single Seated  
(Tight Closing)  
Type 7  
Sizes ½" - 2"



Bronze or Cast Iron body  
Bronze trim.  
Single Seated  
(Tight Closing)  
Type 77  
Sizes 2" - 10"



Bronze, Cast Iron, &  
316 SS body & trim.  
Double Seated  
(Non Tight Closing)  
Type 62  
Sizes ½" - 12"

## Pump Accessories



**Cast Iron**  
Style PSD (Suction  
Diffuser)  
125# Flanged  
Sizes 2" x 1½" - 20"  
x 20"



**Fabricated**  
Style FPSD (Suction  
Diffuser)  
150# - 600# Flanged  
Sizes 2½" x 2½" - 30"  
x 30"



**Cast Iron**  
Style TDV (Triple Duty  
Valve)  
125# Flanged  
Sizes 2" - 20"

## Control Valves (for complete offerings visit Keckley.com)



**Bronze - Type AA**  
SS Trim - Steam Service  
Nylon Trim - Air Service  
For reduced pressure  
above 40 PSI.  
Threaded or Flanged  
Sizes ½" - 6"



**Bronze - Type AR**  
SS Trim - Steam Service  
Nylon Trim - Air Service  
For reduced pressure  
below 40 PSI.  
Threaded or Flanged  
Sizes ½" - 6"



**Bronze & Cast Iron**  
Bronze or SS Trim  
Direct or Reverse Acting  
Type 114, 114R, 119, 119R  
Threaded or Flanged  
Sizes ½" - 12"

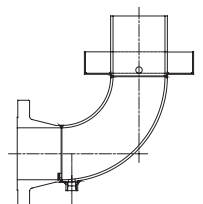


**Bronze or Cast Iron**  
Bronze or SS Trim  
Globe or Angle Pattern  
Steam, Air, Gas, or Liquid  
Type 135  
Threaded or Flanged  
Sizes ¾" - 8"

## Drip Pan Elbows



**Cast Iron**  
Drip Pan Elbow  
Style DPE  
Threaded or Flanged  
Sizes ¾" - 10"  
\*6" & 8" Elbows have 125# Flanges



**Fabricated**  
Drip Pan Elbow  
Style FDPE  
Threaded or Flanged  
Sizes ¾" - 20"